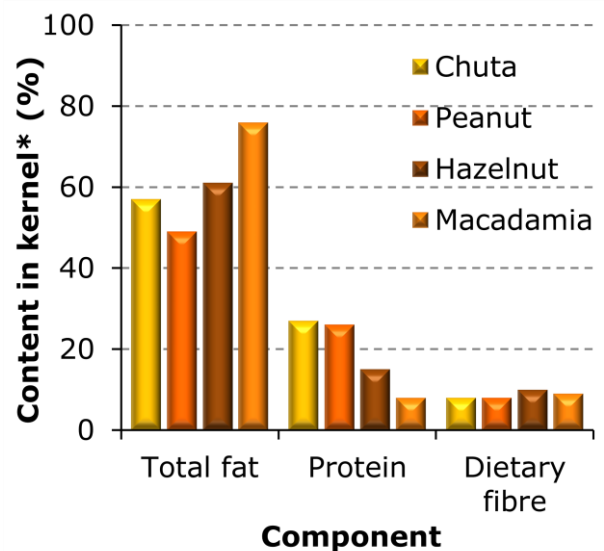


Factsheet

EDIBLE NUT
by JATRO SOLUTIONS

Prominent features of **EdibleNut** cultivars:

- No phorbol esters
- Favourable fatty acid composition
- Favourable amino acid composition
- Concentrated harvest period
- Reduced plant size for easy harvest
- Adapted to diverse environments
- High yield stability



* Sources: Chuta®: own data; other nuts: USDA National Nutrient Data Base

Cultivars completely lacking phorbol esters provide the basis for **EdibleNut**, from which the innovative nut known as **Chuta**® can be grown. Delicious snacks and other foodstuffs can be produced from **Chuta**® kernels. Another possibility is the extraction of oil that can be used for cooking or as a raw material for cosmetics. The remaining kernel meal can be channeled into production of protein powder.

JATRO SOLUTIONS

Echterdinger Str. 30
70599 Stuttgart, Germany
Tel.: +49 711 459 997 60
Fax: +49 711 459 997 89
E-Mail: office@jatrosolutions.com
Internet: <http://www.jatrosolutions.com>

GREEN
IS NOT
ENOUGH